

Mapping a Drive in Windows 7

Map a Network Drive

To map a network drive, open Windows Explorer, open your Computer folder, and then click "Map network drive:"

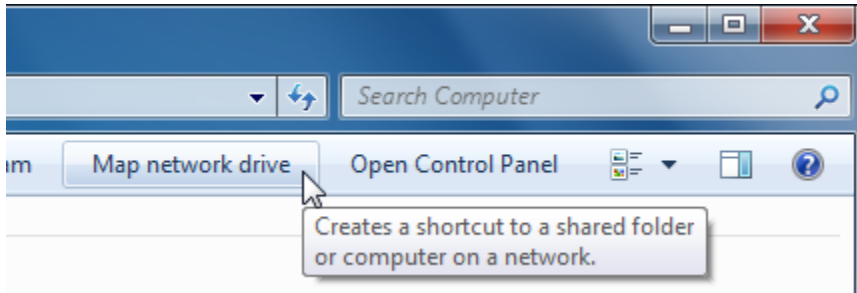


Figure 1: Map network drive button

When the Map Network Drive dialog box appears, choose a drive letter to assign to the mapped drive, and then specify the folder location. The usual format for mapping a drive is \\server_name\your_name, such as \\fileserver\johnsmith:

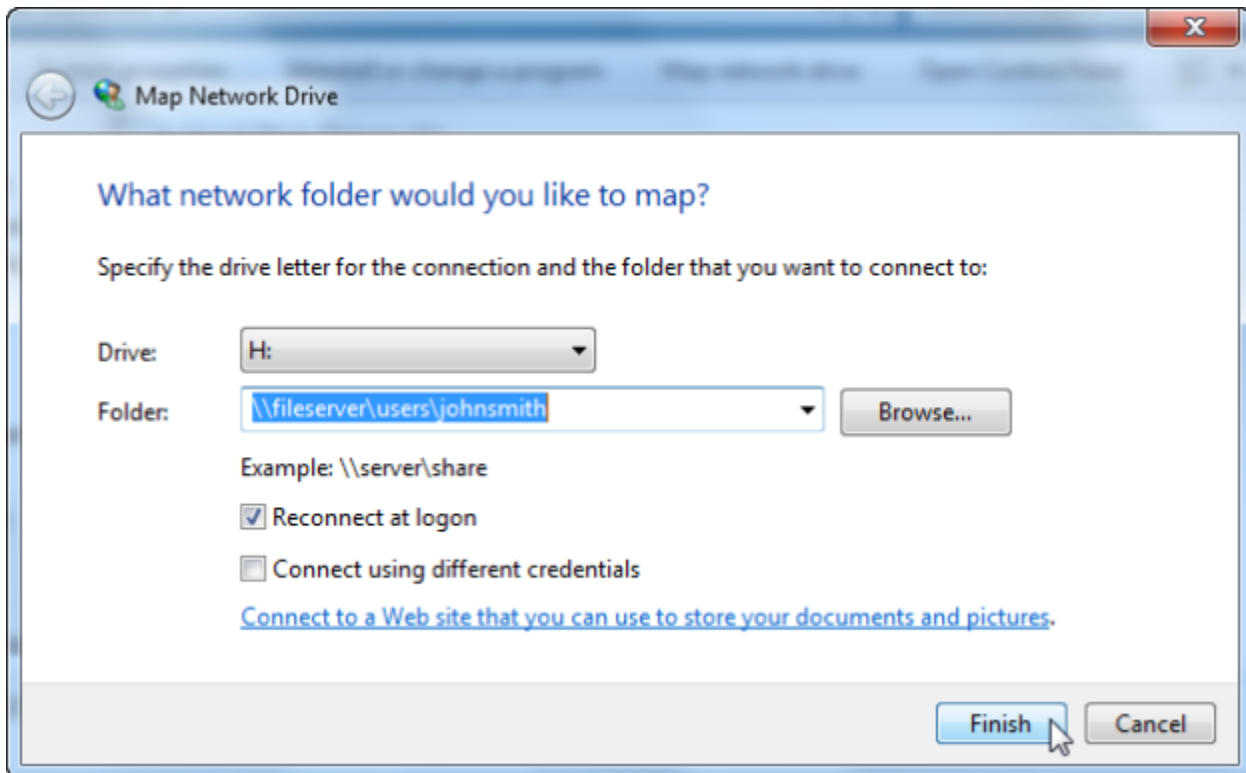


Figure 2: Map network drive options.

If you leave the "Reconnect at logon" check box selected, you will always map this drive when you log into your Windows account (preventing you from having to do this every time you log in). You will most likely have to supply a password for the network drive. When you have entered the proper information, you will be able to see the mapped drive in your computer folder along with the other hard disks.