

Adding Sites to Local Intranet in Browser Settings

Internet Explorer

This can be accomplished by going into Internet Options, selecting the security tab, then selecting "Local Intranet," sites (and selecting advanced), then adding the site you wish to save as a local intranet site.

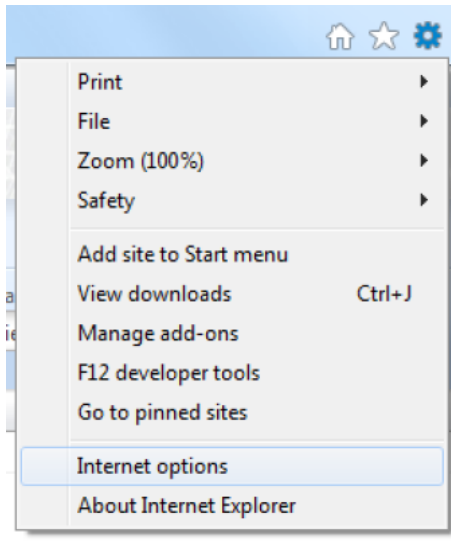


Figure 1: Internet Explorer settings

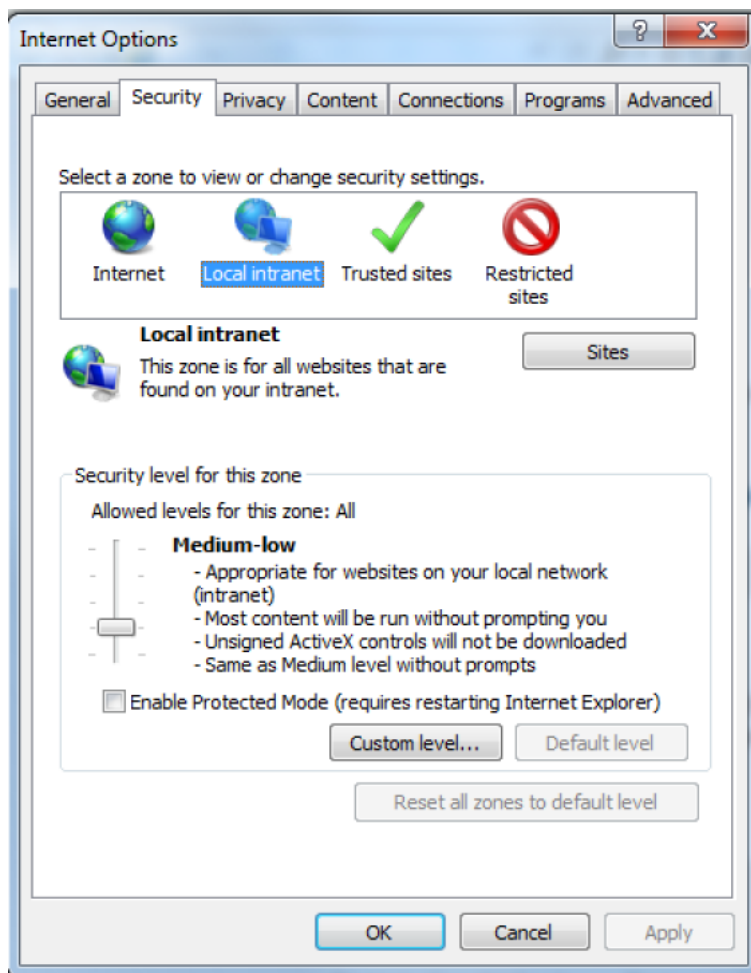


Figure 2: Internet Options Security tab

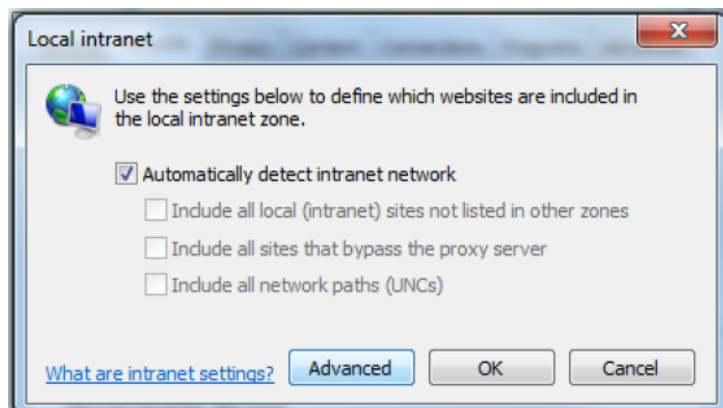


Figure 3: Local intranet settings

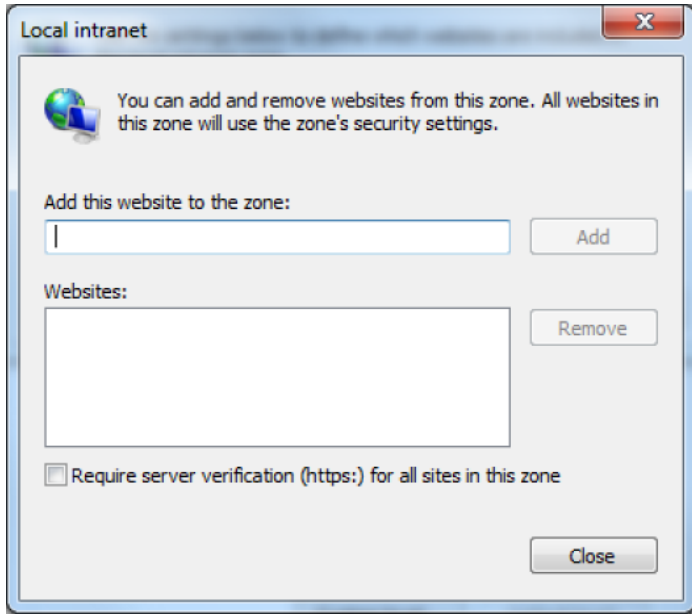


Figure 4: Local Intranet site list

Chrome

Chrome may save passwords automatically after you enter them the first time and select to "Save password" after seeing the prompt.

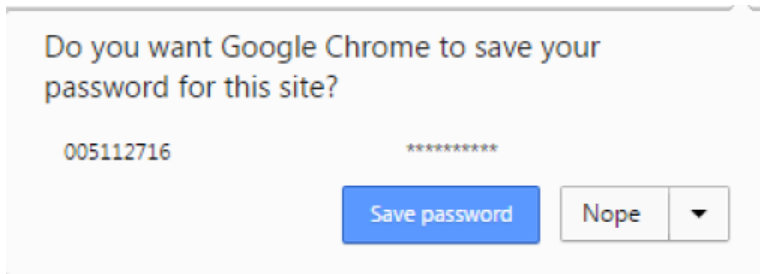


Figure 5: Save password pop-up message

Firefox

Similar to Chrome, Firefox will ask if you want to save passwords automatically after you enter them the first time you access a password accessible intranet site and can be verified or updated by going to the Security settings.

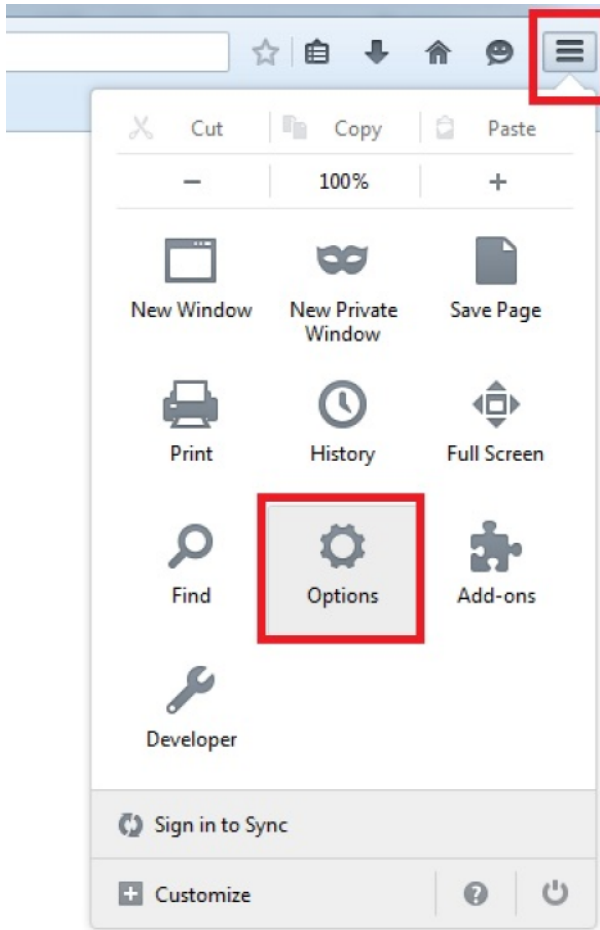


Figure 6: Firefox internet options settings

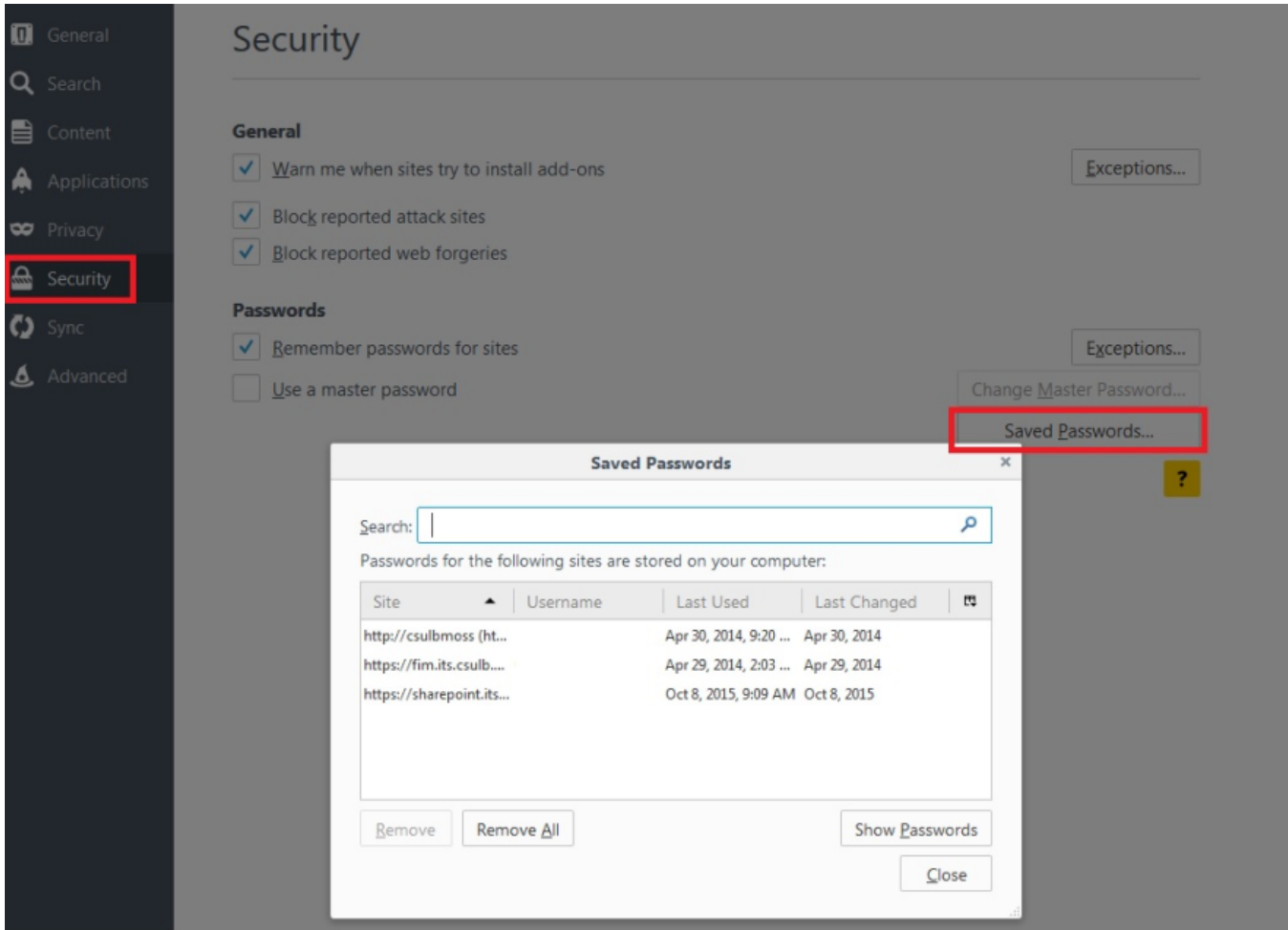


Figure 7: Firefox Security settings for saved passwords