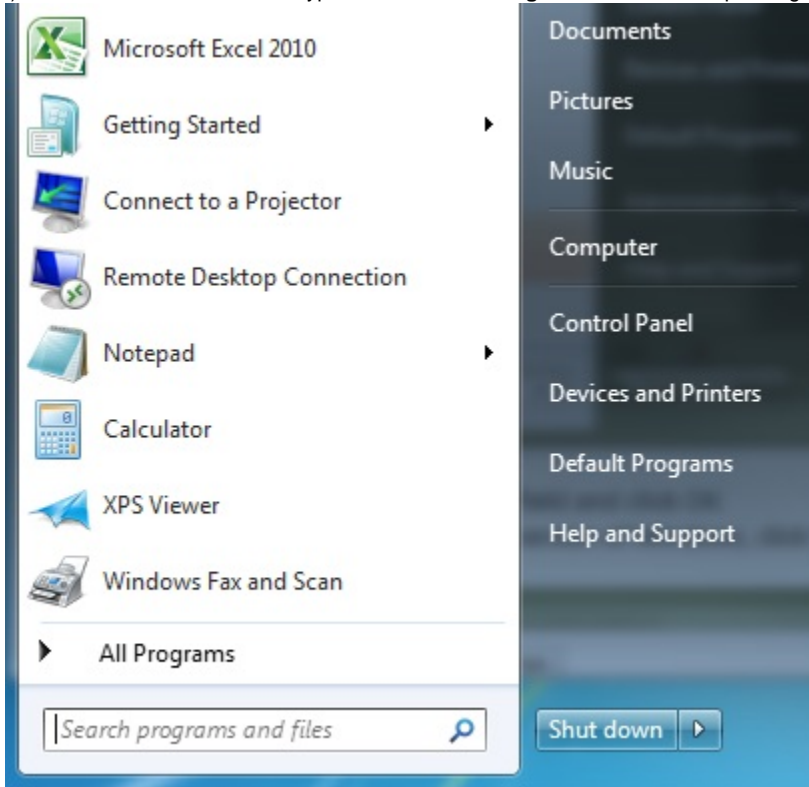


# How to Check the version of DirectX

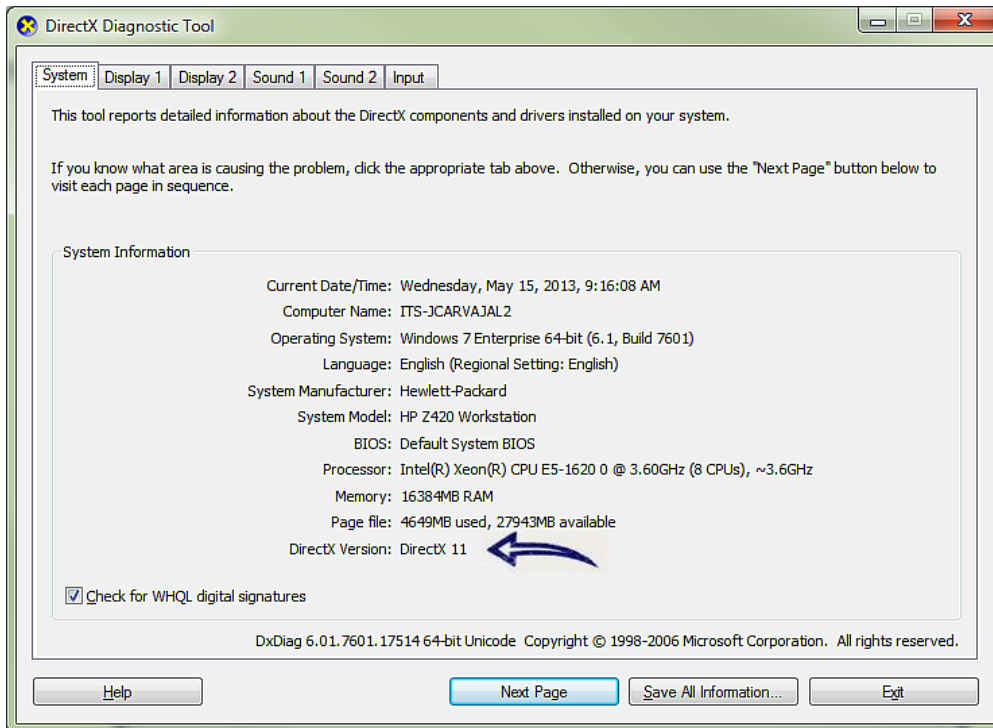
## Diagnose and Verify DirectX Version:

1) Click on the "Start" button or type in the "Search Programs and Files" depending on your Windows version



2) Type "dxdiag" in the search box field and click OK.

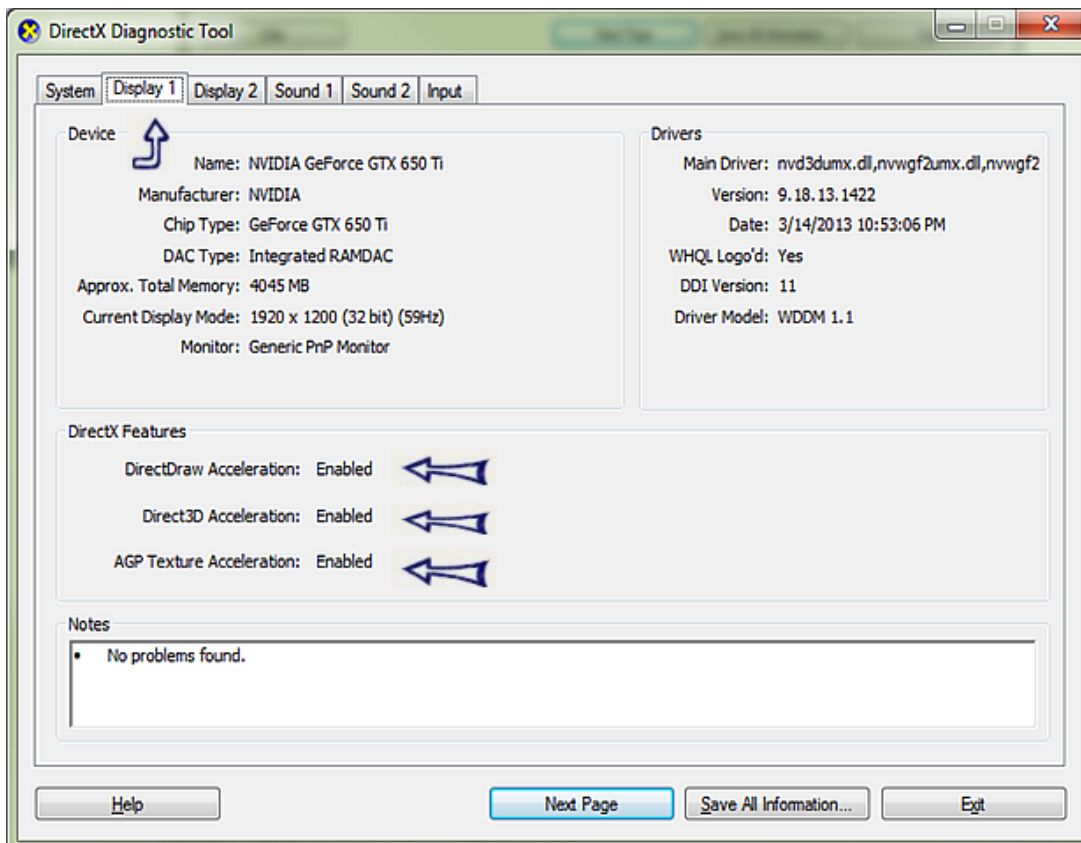
3) The **System** tab provides system information about your computer and specifies the version of DirectX that is installed on the PC. There are several pieces of information that are helpful in troubleshooting DirectX issues. It displays information on your Windows ver. , manufacturer, PC Model, Processor type and speed, RAM Size and DirectX ver.



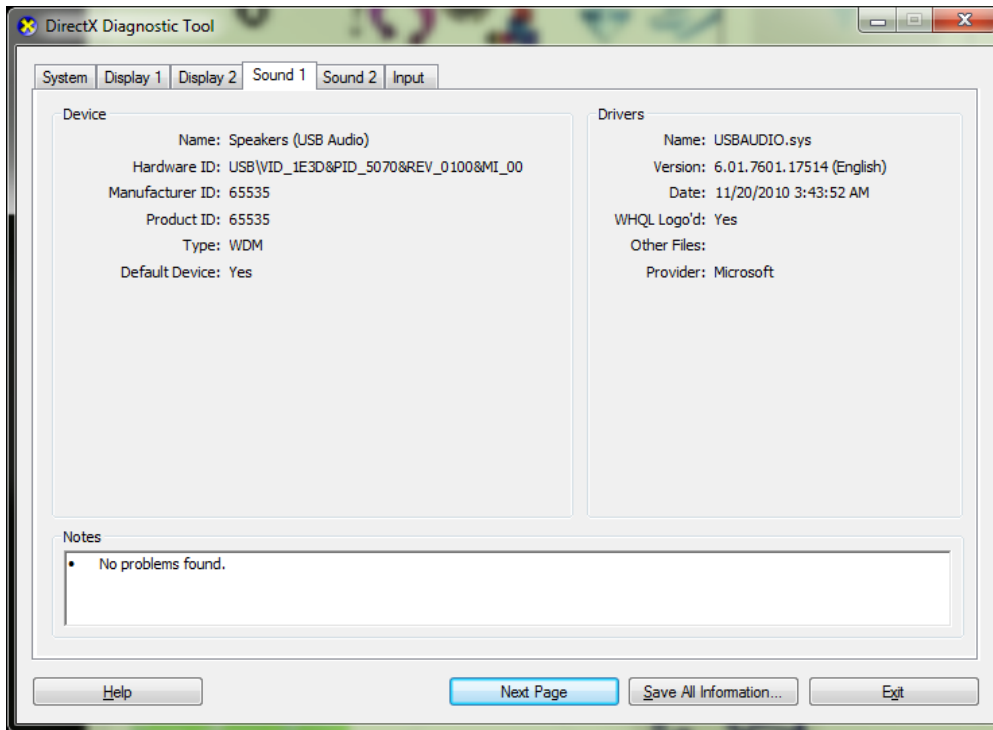
4) If you have multiple displays or video cards, there will be multiple display tabs.

**\*\* Note \*\*** Information in the "DirectX Features" section should be Enabled and Graphics Acceleration should be turned on for your graphics cards(s) If any of the DirectX Features is not enabled, you may have to re-install or update the video drivers.

The "Notes" section, reports any problems found at the time the Diagnostic Tool was executed.



5) The **Sound** Tab displays information about the audio device and driver versions.



## **DIRETX VERSIONS AVAILABLE**

DirectX is included as an important part of the Windows operating system. To update DirectX, apply the latest service pack and other updates through Windows Update.

Operating System	DirectX Version
Windows XP Service Pack 2	DirectX 9.0c
Windows XP Service Pack 3	
Windows XP x64 Edition Service Pack 1 or a later version	
Windows Server 2003 Service Pack 1 or a later version	
Windows Vista	DirectX 10.0
Windows Server 2008	Note This includes all the components of DirectX 9.0c, except for Direct3D Retained Mode, DirectPlay Voice, and the Visual Basic 6.0 DirectX 7 and DirectX 8 support.
Windows Vista Service Pack 1 or a later version	DirectX 10.1
Windows Server 2008 Service Pack 1 or a later version	

Windows 8

Windows RT

Windows 7

Windows Server 2008 R2

Windows Vista SP2 together with update 971644 or update 971512

Windows Server 2008 SP2 together with update 971644 or update 971512

DirectX 11.0

Note This includes all the components of DirectX 10.0 and DirectX 10.1.