

# Use Aruba QuickConnect to connect a Windows computer to Beachnet+

Prepare by making sure the computer was freshly booted **before** attempting to run this tool as a local administrator. Windows XP (SP3) through Windows 10 are supported by this tool. If you believe the computer is blacklisted, please contact [net-engr@csulb.edu](mailto:net-engr@csulb.edu) with the MAC Address of the wireless network interface.

## Accessing the QuickConnect Tool

Steps include:

- In device WiFi settings, connect to the “beachnet-guest-access” network.
- Open a browser, which will then display the campus guest login page, as shown below.
- Click on the blue QuickConnect link as shown below.

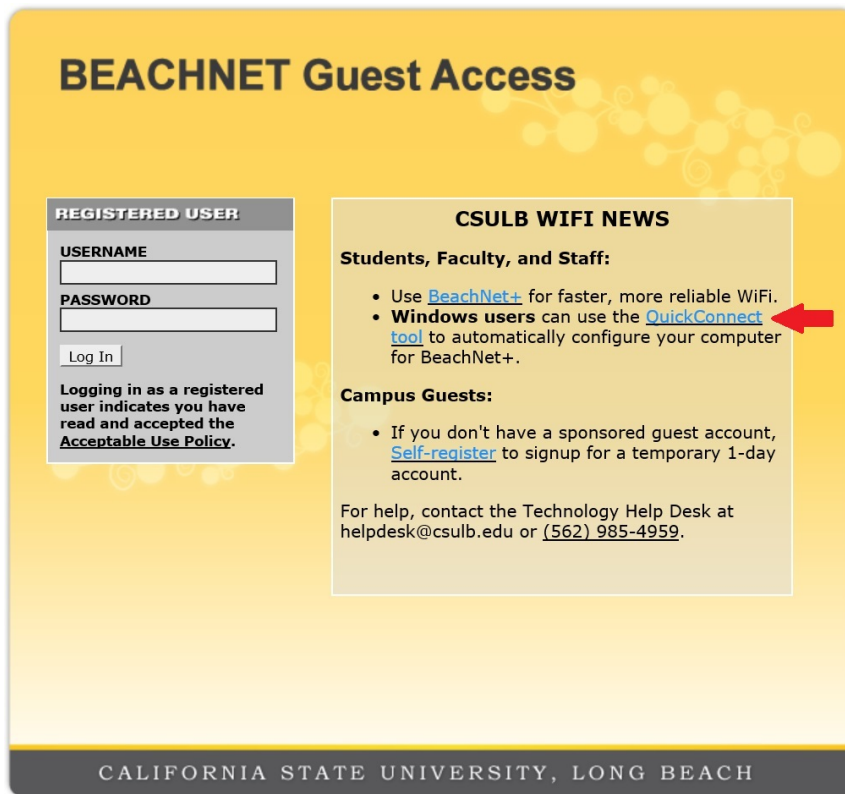


Figure 1: beachnet guest access portal page

## Installation Instructions

1. Download the Aruba QuickConnect tool ( [CSULB-beachnetplus.exe](#) ) for Windows.
2. Run the tool with local Administrator rights and allow it to execute.
3. Click Next.

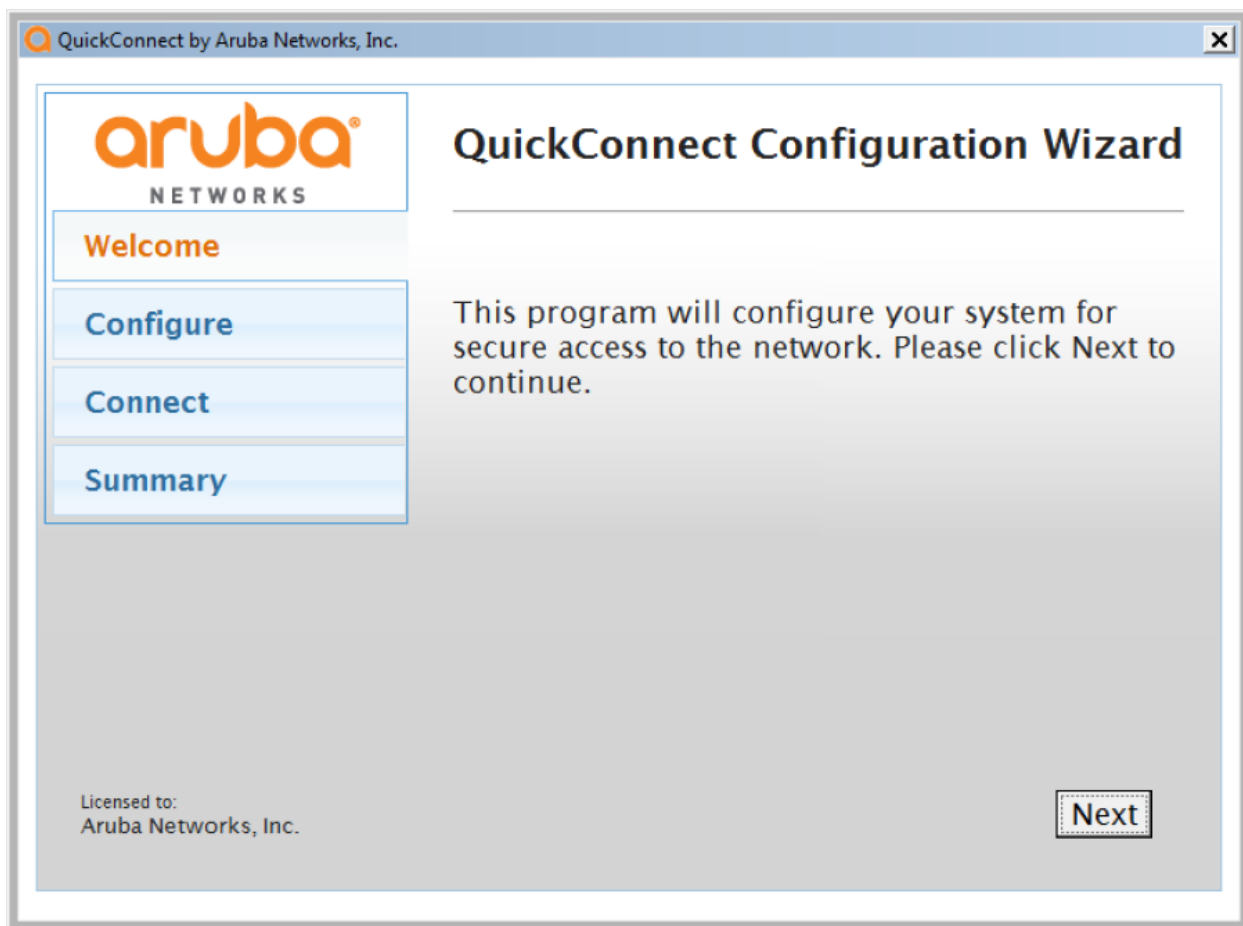


Figure 2: Aruba QuickConnect wizard

4. Enter a valid campusID (9-digits)/BeachID password and click Next.

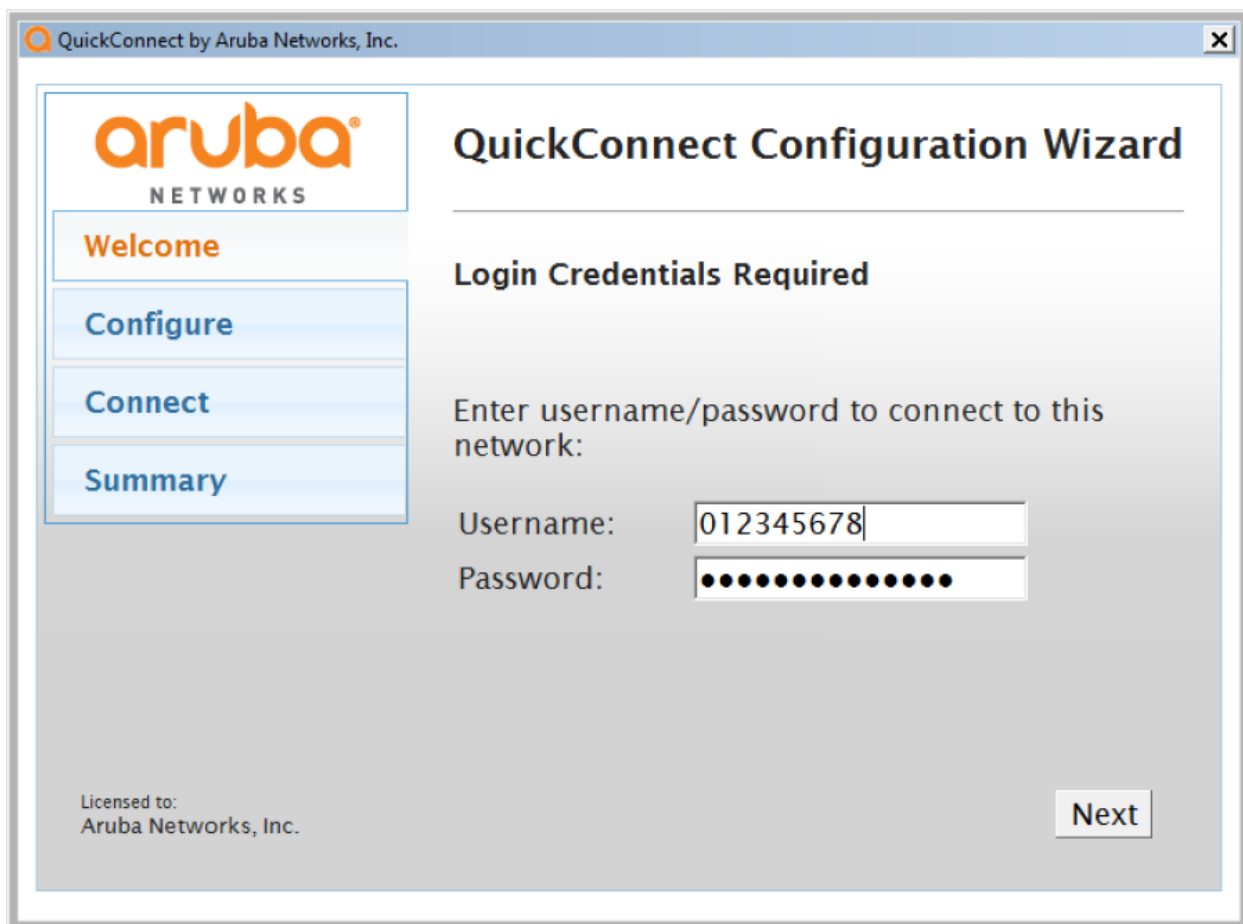


Figure 2: Aruba QuickConnect wizard continued

5. The program will auto-configure your system with the beachnet+ profile. Click Connect.

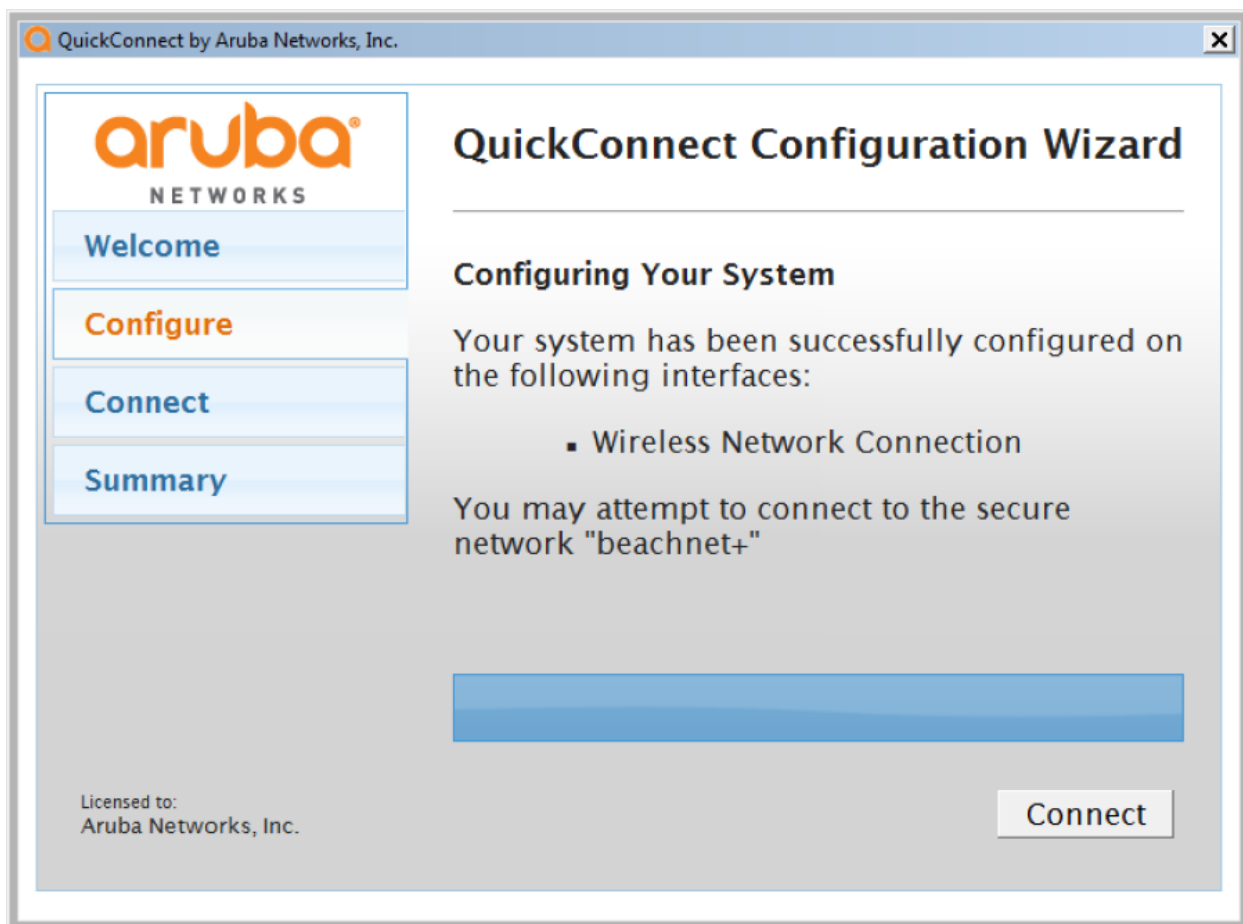


Figure 3: Aruba QuickConnect wizard continued

6. The computer will now attempt to connect and authenticate to the beachnet+ WiFi network.

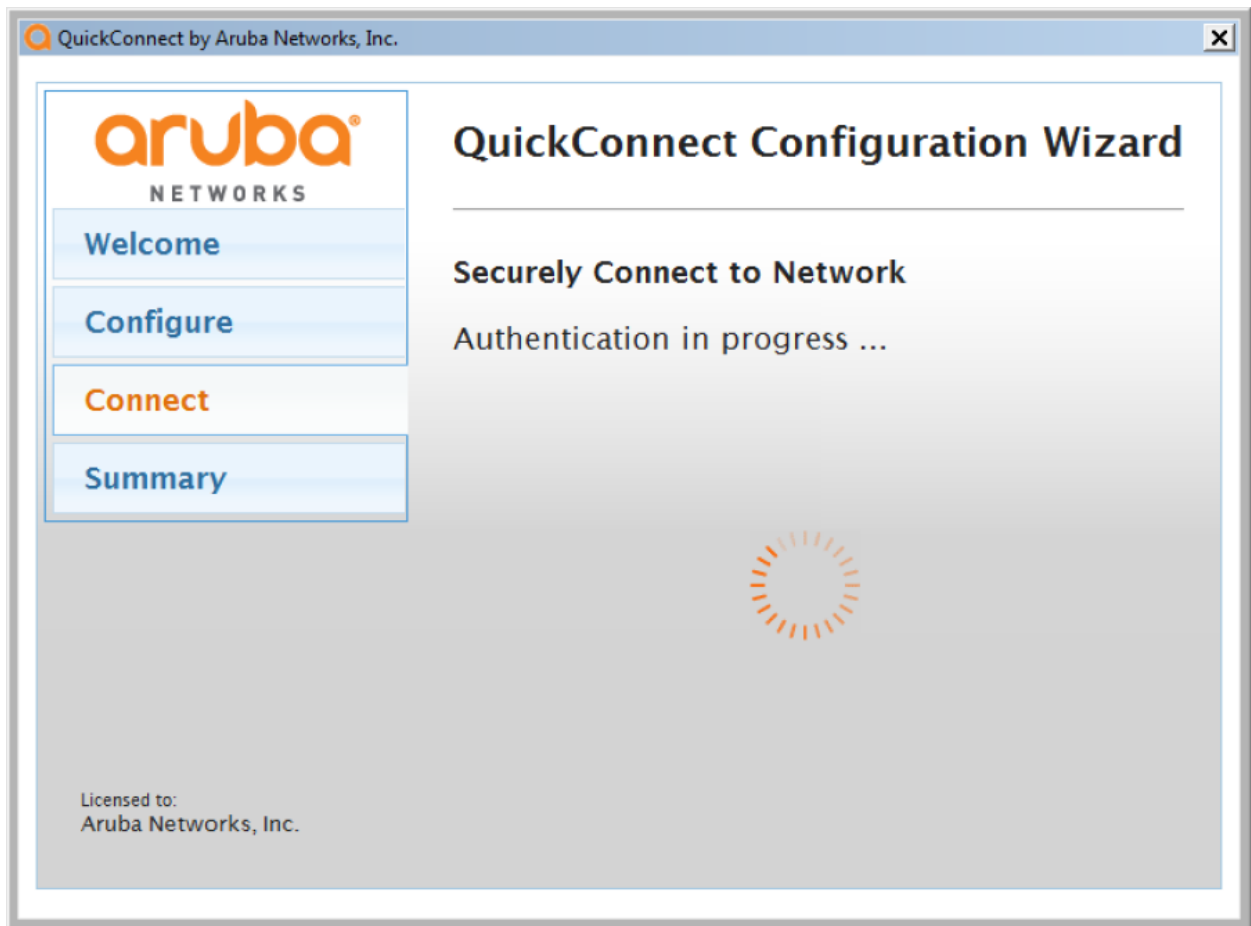


Figure 4: Aruba QuickConnect wizard continued

7. A successful connection will reveal the computer's IP Address. Click Close.



Welcome

Configure

Connect

Summary

## QuickConnect Configuration Wizard

---

### Connection Summary

You have been successfully connected to the network with the following IP Address:

Wireless Network Connection : 10.31.1.1

You can view a summary of the changes made to your system [here](#)

Licensed to:  
Aruba Networks, Inc.

Close