

Accessing BeachNet+ Wireless with Mac Lion OS

The following instructions describe how to connect a Mac computer with the Lion OS to BeachNet+.

NOTE: To connect to BeachNet+, you must have a valid nine digit CampusID along with your BeachID password. If you have not activated your BeachID password, visit <https://beachid.csulb.edu/>. Also note that you will need to update your password on your mobile device whenever you update your BeachID password.

Configuration Steps

1. Click the **Airport** icon to enable the Airport (wireless) adapter and turn Wi-Fi on.



Figure 1: Airport wireless icon

2. Select beachnet+.

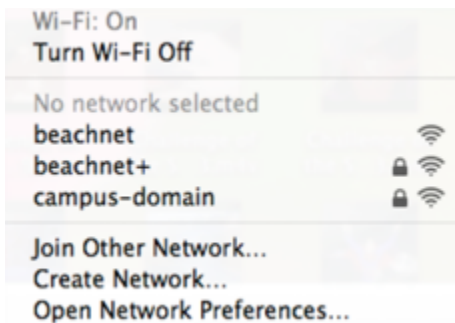


Figure 2: Beachnet+ wireless network selection

3. Enter your BeachID credentials to authenticate to beachnet+. In the **Username** field, enter your nine-digit CampusID, and in the **Password** field, enter your BeachID password. You may select **Remember this network** to automatically connect to beachnet+ when you are in an area with campus wireless.

Note: You will need to update your password on your mobile device whenever you update your BeachID password, otherwise your BeachNet+ connection will not work after a password update.

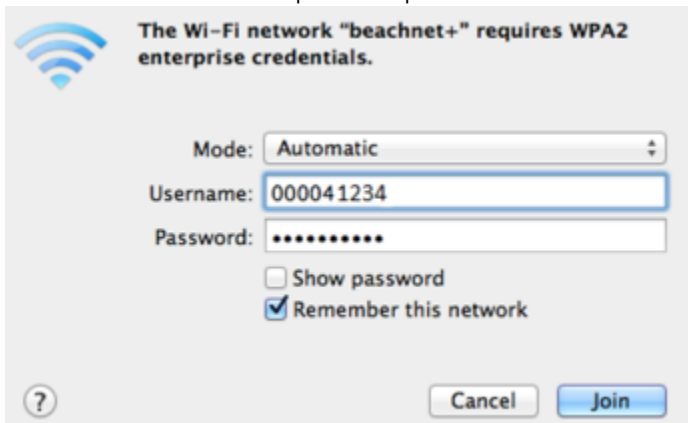


Figure 3: Enter authentication information

4. Click **Show Certificate** button.



Figure 4: Verify certificate

5. Confirm that the server name is **its-wifiauth01.its.campus.ad.csulb.edu** and the Certificate Issuer is **InCommon Server CA**.

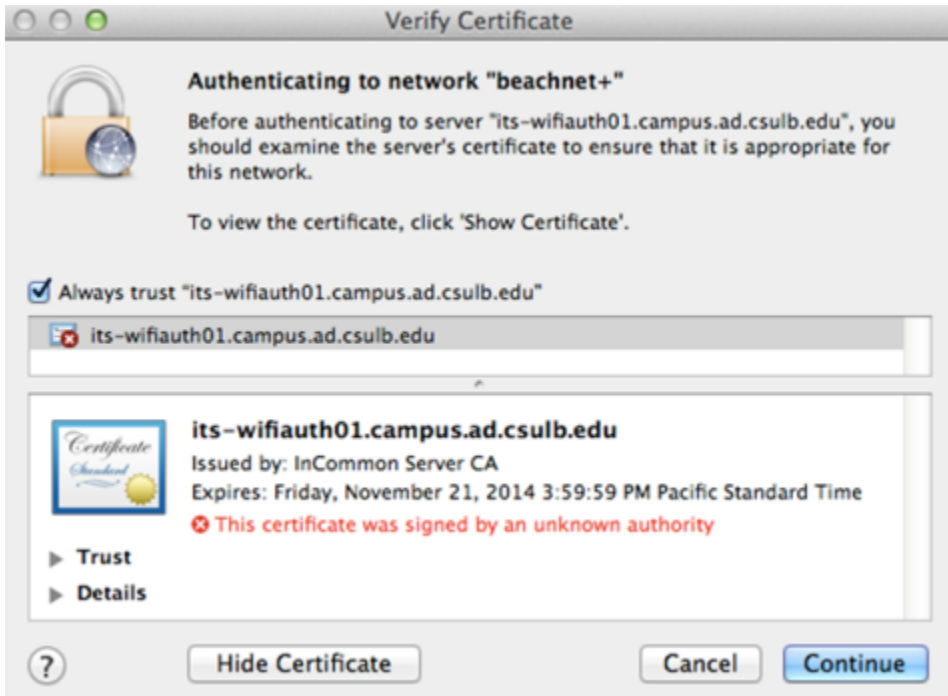


Figure 5: Confirm certificate information

6. Enter the Name and Password for your MacBook laptop to add the Certificate as a trusted setting to your computer's local keychain.



Figure 6: Enter keychain information

7. If you'd like to verify that the connection has been made, click **Network Preferences** from the **Airport** menu and look for an IP Address that starts with 10.x.x.x and the text indicator, Authenticated via PEAP.

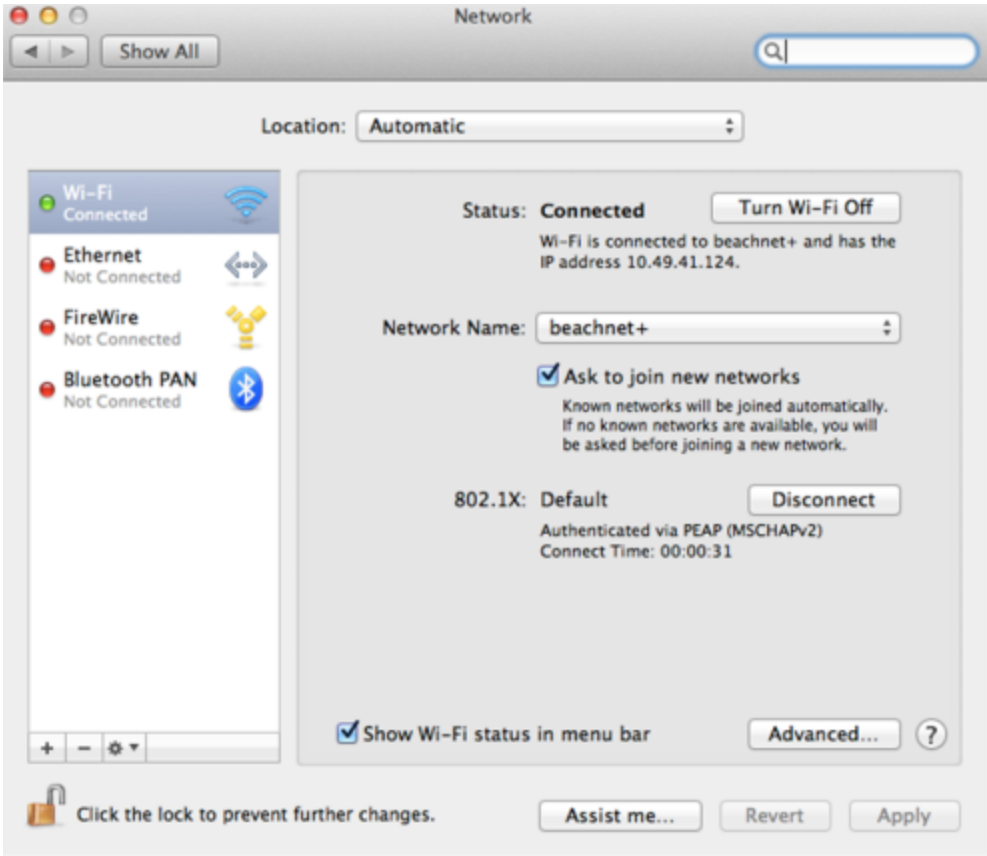


Figure 7: Network settings